

## Elabscience® Flow Cytometry Antibody High IF Publications in 2022(partial)

### 01 IF=32.086 //

- Periodical** : ADVANCED MATERIALS
- Product Name** : APC Anti-Mouse CD62L Antibody
- Cat.No.** : E-AB-F1011E
- Title** : Lymph Node Targeted Drug Delivery for Effective Immunomodulation to Prolong the Long-Term Survival After Heart Transplantation

### 03 IF=14.903 //

- Periodical** : Acta Pharmaceutica Sinica B
- Product Name** : AF/LE Purified Anti-Mouse CD274/PD-L1 Antibody 、 PerCP/Cyanine5.5 Anti-Mouse Ly-6G/Ly-6C (Gr-1) Antibody
- Cat.No.** : E-AB-F11320 、 E-AB-F1120J
- Title** : Anti-PD-L1 antibody enhances curative effect of cryoablation via antibody-dependent cell-mediated cytotoxicity mediating PD-L1<sup>high</sup>CD11b<sup>+</sup> cells elimination in hepatocellular carcinoma

### 05 IF=13.273 //

- Periodical** : CHEMICAL ENGINEERING JOURNAL
- Product Name** : FITC Anti-Mouse F4/80 Antibody PE/Cyanine7 Anti-Mouse CD86 Antibody PE Anti-Mouse CD206 Antibody FITC Anti-Mouse CD3ε Antibody
- Cat.No.** : E-AB-F0995C 、 E-AB-F0994H 、 E-AB-F1135D 、 E-AB-F1103C
- Title** : Engineered stem cell biomimetic liposomes carrying levamisole for macrophage immunity reconstruction in leukemia therapy

### 07 IF=12.91 //

- Periodical** : MOLECULAR THERAPY
- Product Name** : FITC Anti-Human CD31 Antibody
- Cat.No.** : E-AB-F1050C
- Title** : CRISPR-mediated MECOM depletion retards tumor growth by reducing cancer stem cell properties in lung squamous cell carcinoma

### 09 IF=10.723 //

- Periodical** : CARBOHYDRATE POLYMERS
- Product Name** : Purified Anti-Mouse F4/80 Antibody
- Cat.No.** : E-AB-F0995A
- Title** : Dopamine-modified chitosan hydrogel for spinal cord injury

### 02 IF=17.694 //

- Periodical** : Nature Communications
- Product Name** : FITC anti-mouse/human CD11b antibody
- Cat.No.** : E-AB-F1081C
- Title** : Brain milieu induces early microglial maturation through the BAX-Notch axis

### 04 IF=11.566 //

- Periodical** : Theranostics
- Product Name** : PE Anti-Mouse F4/80 Antibody、 APC Anti-Mouse CD64 Antibody
- Cat.No.** : E-AB-F0995D 、 E-AB-F1186E
- Title** : Mitochondrial STAT3 exacerbates LPS-induced sepsis by driving CPT1a-mediated fatty acid oxidation

### 06 IF=12.02 //

- Periodical** : Cancer Immunology Research
- Product Name** : FITC Anti-Human/Mouse CD44 Antibody PE Anti-Mouse CD45 Antibody FITC Rat IgG2b, κ Isotype Control PE Rat IgG2b, κ Isotype Control
- Cat.No.** : E-AB-F1100C 、 E-AB-F1136D 、 E-AB-F09842C 、 E-AB-F09842D
- Title** : A Novel Engineered AAV-based Neoantigen Vaccine in Combination with Radiotherapy Eradicates Tumors

### 08 IF=11.6 //

- Periodical** : Theranostics
- Product Name** : PerCP/Cyanine5.5 Anti-Mouse CD45 Antibody
- Cat.No.** : E-AB-F1081C
- Title** : Promising alternatives of CD47 monoclonal antibody: an injectable degradable hydrogel loaded with PQ912 for postoperative immunotherapy effectively blocks CD47-SIRPα signal

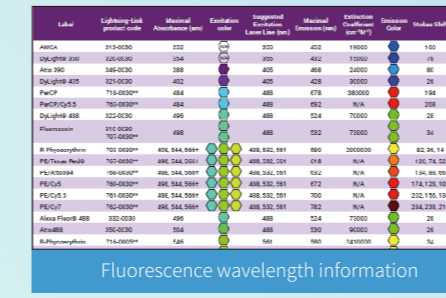
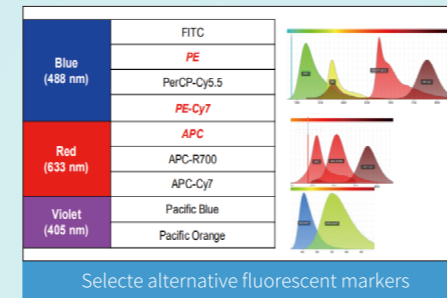
### 10 IF=10.383 //

- Periodical** : ACS Applied Materials & Interfaces
- Product Name** : APC Anti-Mouse CD3 Antibody
- Cat.No.** : E-AB-F1013E
- Title** : Self-Activated Cascade Biocatalysis of Glucose Oxidase-Polycation-Iron Nanoconjugates Augments Cancer Immunotherapy

## Elabscience® Featured Services

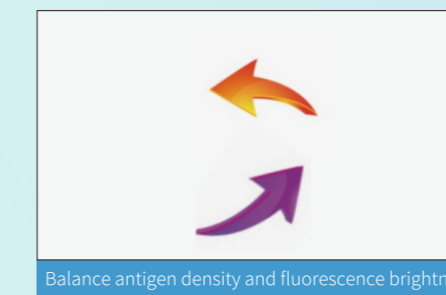
### ▶ Color Schemes Services

Elabscience® provides customers with professional and free color schemes services. You only need to send your makers (logical relationship or reference, expression level) and basic information of flow cytometer (laser,-detection channel, filter information) to our technical support, and we will provide professional and free color schemes services based on your experiment purpose.



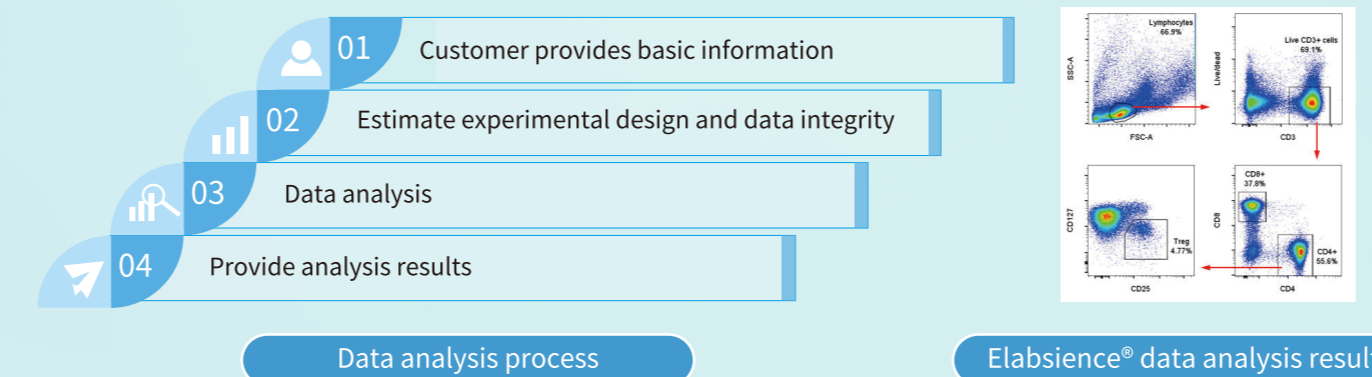
Cell	Marker	Density
lymphocyte	CD3	High
	CD4	High
	CD8	Medium
	CD19	Medium
	CD132	Low

Query the strength of marker expression



### ▶ Data Analysis Services

You can also provide the original data of experimental results and logical relationship of markers to technical support. We can provide professional data analysis services for you.



## Elabscience®

# Flow Cytometry Antibodies

Applicable for All Commercial Flow Cytometer

**Excellent Quality**  
Selected high-quality FACS monoclonal antibodies and excellent fluorescent labeling technology

**Cost-Effective**  
Small package, only need \$15~60

**Fast Delivery**  
Common markers are in full stock

- ▶ Markers of Common Cells
- ▶ Classical Detection Markers of Common Cells
- ▶ Elabscience® Flow Cytometry Antibody High IF Publications
- ▶ Elabscience® Featured Services

Elabscience Biotechnology Inc.

## Elabscience Biotechnology Inc.

Tel: 1-240-252-7368  
Fax: 1-240-252-7376

Web: www.elabscience.com  
Email: techsupport@elabscience.com

# Markers of Common Cells

Elabscience® flow cytometry antibodies (FACS) are dedicated to help you efficient identification of immune cells and easily identify cell activation status.

## Anti-Human Markers

T cells				B cells				Dendritic cells					
Marker	Clone No.	Fluorochrome	Cat.No.	Marker	Clone No.	Fluorochrome	Cat.No.	Marker	Clone No.	Fluorochrome	Cat.No.		
CD127/IL-7RA	A019D5	APC	E-AB-F1152E	CD138	DL-101	APC	E-AB-F1154E	CD11b	ICRF44	APC	E-AB-F1146E		
		FITC	E-AB-F1152C			FITC	E-AB-F1146C			FITC	E-AB-F1146C		
		PE	E-AB-F1152D			PE	E-AB-F1146D			PE	E-AB-F1146D		
CD134	Ber-ACT35	APC	E-AB-F1153E	CD19	CB19	APC	E-AB-F1004C	CD11c	BU15	APC	E-AB-F1118E		
		FITC	E-AB-F1153C			FITC	E-AB-F1004C			FITC	E-AB-F1118C		
		PE	E-AB-F1153D			PE	E-AB-F1004D			PE	E-AB-F1118D		
CD183	G025H7	APC	E-AB-F1156E	CD20	BCA/B20	APC	E-AB-F1045C	CD123	6H6	APC	E-AB-F1117D		
		FITC	E-AB-F1156C			FITC	E-AB-F1045C			FITC	E-AB-F1117C		
		PE	E-AB-F1156D			PE	E-AB-F1045D			PE	E-AB-F1117D		
CD27	O323	APC	E-AB-F1140E	CD21	BU32	APC	E-AB-F1046C	CD14	M5E2	APC	E-AB-F1209E		
		FITC	E-AB-F1140C			FITC	E-AB-F1046C			FITC	E-AB-F1209C		
		PE	E-AB-F1140D			PE	E-AB-F1046D			PE	E-AB-F1209D		
CD3	OKT3	APC	E-AB-F1001E	CD22	BU59	APC	E-AB-F1047C	CD303	201A	APC	E-AB-F1162E		
		FITC	E-AB-F1001C			FITC	E-AB-F1047C			FITC	E-AB-F1162C		
		PE	E-AB-F1001D			PE	E-AB-F1047D			PE	E-AB-F1162D		
CD4	RPA-T4	APC	E-AB-F1109E	CD24	ML5	APC	E-AB-F1037C	CD40	3A8	APC	E-AB-F1037C		
		FITC	E-AB-F1109C			FITC	E-AB-F1037C			FITC	E-AB-F1037C		
		PE	E-AB-F1109D			PE	E-AB-F1037D			PE	E-AB-F1037D		
CD45RA	HI100	APC	E-AB-F1052E	CD27	O323	APC	E-AB-F1140E	CD80	2D10	APC	E-AB-F0993E		
		FITC	E-AB-F1052C			FITC	E-AB-F1140C			FITC	E-AB-F0993E		
		PE	E-AB-F1052D			PE	E-AB-F1140D			PE	E-AB-F0993D		
CD45RO	UCHL1	APC	E-AB-F1139E	CD38	HIT2	APC	E-AB-F1058E	CD86	BU63	APC	E-AB-F1012E		
		FITC	E-AB-F1139C			FITC	E-AB-F1058C			FITC	E-AB-F1012C		
		PE	E-AB-F1139D			PE	E-AB-F1058D			PE	E-AB-F1012D		
CD62L	DREG56	APC	E-AB-F1232E	CD40	3A8	APC	E-AB-F1037D	HLA-DR	L243	APC	E-AB-F1111E		
		FITC	E-AB-F1051C			FITC	E-AB-F1037C			FITC	E-AB-F1111C		
		PE	E-AB-F1051D			PE	E-AB-F1037D			PE	E-AB-F1111D		
CD8	OKT-8	APC	E-AB-F1110E	CD86	BU63	APC	E-AB-F1012E	<b>Stem cells</b>					
		FITC	E-AB-F1110C			FITC	E-AB-F1012C	Marker	Clone No.	Fluorochrome	Cat.No.		
		PE	E-AB-F1110D			PE	E-AB-F1012D	CD29	TS2/16.2.1	APC	E-AB-F1049E		
IFN-γ	B27	APC	E-AB-F1196E	IgD	IA6-2	APC	E-AB-F1171E	CD44	P2A1	APC	E-AB-F1038E		
		FITC	E-AB-F1196C			FITC	E-AB-F1171C			FITC	E-AB-F1038C		
		PE	E-AB-F1196D			PE	E-AB-F1171D			PE	E-AB-F1038D		
IL-10	JES3-9D7	APC	E-AB-F1198E	IgM	MHM-88	APC	E-AB-F1172E	CD66b	43A3	APC	E-AB-F1243E		
		FITC	E-AB-F1198C			FITC	E-AB-F1172C			FITC	E-AB-F1243C		
		PE	E-AB-F1198D			PE	E-AB-F1172D			PE	E-AB-F1243D		
IL-17A	BL168	APC	E-AB-F1173E	<b>NK cells</b>				CD73	AD2	APC	E-AB-F1242E		
		FITC	E-AB-F1173C	Marker	Clone No.	Fluorochrome	Cat.No.			FITC	E-AB-F1242C		
		PE	E-AB-F1173D	CD122/IL-2RB	TU27	APC	E-AB-F1151E			PE	E-AB-F1242D		
IL-2	MQ1-17H12	APC	E-AB-F1200E	CD16	CB16	APC	E-AB-F1005E	CD41	HIP8	APC	E-AB-F1088E		
		FITC	E-AB-F1200C			FITC	E-AB-F1005C			FITC	E-AB-F1088C		
		PE	E-AB-F1200D			PE	E-AB-F1005D			PE	E-AB-F1088D		
IL-21	3A3-N2	APC	E-AB-F1202E	CD27	O323	APC	E-AB-F1140E	CD61	VI-PL2	APC	E-AB-F1166E		
		FITC	E-AB-F1202C			FITC	E-AB-F1140C			FITC	E-AB-F1166C		
		PE	E-AB-F1202D			PE	E-AB-F1140D			PE	E-AB-F1166D		
IL-4	MP4-25D2	APC	E-AB-F1203E	CD56	MEM188	APC	E-AB-F1006E	<b>Platelet</b>					
		FITC	E-AB-F1203C			FITC	E-AB-F1006C	Marker	Clone No.	Fluorochrome	Cat.No.		
		PE	E-AB-F1203D			PE	E-AB-F1006D	CD41	HIP8	APC	E-AB-F1204E		
TCR γ/δ	B1	APC	E-AB-F1145E	CD57	HMK-1	APC	E-AB-F1067E	CD117	104D2	APC	E-AB-F1150E		
		FITC	E-AB-F1145C			FITC	E-AB-F1067C			FITC	E-AB-F1150C		
		PE	E-AB-F1145D			PE	E-AB-F1067D			PE	E-AB-F1150D		
<b>Macrophage/Monocyte</b>				<b>Granulocyte</b>				<b>Endothelial cells</b>					
Marker	Clone No.	Fluorochrome	Cat.No.	Marker	Clone No.	Fluorochrome	Cat.No.	Marker	Clone No.	Fluorochrome	Cat.No.		
CD11b	ICRF44	APC	E-AB-F1146E	CD117	104D2	APC	E-AB-F1150E	CD31	158-2B3	APC	E-AB-F1050E		
		FITC	E-AB-F1146C			FITC	E-AB-F1150C			FITC	E-AB-F1050C		
		PE	E-AB-F1146D			PE	E-AB-F1150D			PE	E-AB-F1050D		
CD11c	BU15	APC	E-AB-F1118E	CD11b	ICRF44	APC	E-AB-F1146E	CD13	M5E2	APC	E-AB-F1209E		
		FITC	E-AB-F1118C			FITC	E-AB-F1146C			FITC	E-AB-F1209C	FITC	E-AB-F1117D
		PE	E-AB-F1118D			PE	E-AB-F1146D			PE	E-AB-F1209D	PE	E-AB-F1117D
CD14	M5E2	APC	E-AB-F1209E	CD123	6H6	APC	E-AB-F1074E	CD13	B-F10	APC	E-AB-F1074E		
		FITC	E-AB-F1209C			FITC	E-AB-F1074C			FITC	E-AB-F1074C		
		PE	E-AB-F1209D			PE	E-AB-F1074D			PE	E-AB-F1074D		
CD16	CB16	APC	E-AB-F1005E	CD13	B-F10	APC	E-AB-F1074E	CD15	HI98	APC	E-AB-F1079E		
		FITC	E-AB-F1005C			FITC	E-AB-F1074C			FITC	E-AB-F1079C		
		PE	E-AB-F1005D			PE	E-AB-F1074D			PE	E-AB-F1079D		
CD80	2D10	APC	E-AB-F1232E	CD15	HI98	APC	E-AB-F1083E	CD33	6C5	APC	E-AB-F1083E		
		FITC	E-AB-F1232C			FITC	E-AB-F1083C			FITC	E-AB-F1083C		
		PE	E-AB-F1232D			PE	E-AB-F1083D			PE	E-AB-F1083D		
CD86	BU63	APC	E-AB-F1012E	CD33	6C5	APC	E-AB-F1083E	CD66b	G10F5	APC	E-AB-F1267E		
		FITC	E-AB-F1012C			FITC	E-AB-F1083C			FITC	E-AB-F1267C		
		PE	E-AB-F1012D			PE	E-AB-F1083D			PE	E-AB-F1267D		
HLA-DR	L243	APC	E-AB-F1111E	CD66b	G10F5	APC	E-AB-F1267E			FITC	E-AB-F1038E		
		FITC	E-AB-F1111C			FITC	E-AB-F1267C			PE	E-AB-F1038D		
		PE	E-AB-F1111D			PE	E-AB-F1267D			PE	E-AB-F1038D		

## Anti-Mouse Markers

T cells				B cells				Dendritic cells			
Marker	Clone No.	Fluorochrome	Cat.No.	Marker	Clone No.	Fluorochrome	Cat.No.	Marker	Clone No.	Fluorochrome	Cat.No.
CD127	A7R34	APC	E-AB-F1023E	CD19	1D3	APC	E-AB-F0986E	CD11b	M1/70	APC	E-AB-F1081E
		FITC	E-AB-F1023C			FITC	E-AB-F0986C			FITC	E-AB-F1081C
		PE	E-AB-F1023D			PE	E-AB-F0986D			PE	E-AB-F1081D
CD183	CXCR3-173	APC	E-AB-F1114E	CD1d	19G11	APC	E-AB-F1032E	CD11c	N418	APC	E-AB-F0991E
		FITC	E-AB-F1114C			FITC	E-AB-F1032C			FITC	E-AB-F0991C
		PE	E-AB-F1114D			PE	E-AB-F1032D			PE	E-AB-F0991D
CD25	PC-61.5.3	APC	E-AB-F1102E	CD23	B3B4	APC	E-AB-F1178E	CD40	FGK4.5/FGK45	APC	E-AB-F1028E
		FITC	E-AB-F1102C			FITC	E-AB-F1178C			FITC	E-AB-F1028C
		PE	E-AB-F1102D			PE	E-AB-F1178D			PE	E-AB-F1028D
CD279/PD-1	29F.1A12	APC	E-AB-F1131E	CD24	M1/69	APC	E-AB-F1179E	CD45	30-F11	APC	E-AB-F1136E
		FITC	E-AB-F1131C			FITC	E-AB-F1179C			FITC	E-AB-F1136C
		PE	E-AB-F1131D			PE	E-AB-F1179D			PE	E-AB-F1136D
CD3	17A2	APC	E-AB-F1013E	CD45	30-F11	APC	E-AB-F1136E	CD45R/B220	RA3.3A 1/6.1	APC	E-AB-F1112E
		FITC	E-AB-F1013C			FITC	E-AB-F1136C			FITC	E-AB-F1112C
		PE	E-AB-F1013D			PE	E-AB-F1136D			PE	E-AB-F1112D
CD366/Tim-3	RMT3-23	APC	E-AB-F1192E	CD45R/B220	RA3.3A 1/6.1	APC	E-AB-F1112E	CD80	16-10A1	APC	E-AB-F0992E
		FITC	E-AB-F1192C			FITC	E-AB-F1112C			FITC	E-AB-F0992C
		PE	E-AB-F1192D			PE	E-AB-F1112D			PE	E-AB-F0992D
CD3e	145-2C11	APC	E-AB-F1103E	CD5	53-7.3	APC	E-AB-F1185D	CD86	GL-1	APC	E-AB-F0994E
		FITC	E-AB-F1103C			FITC	E-AB-F1185C			FITC	E-AB-F0994C
		PE	E-AB-F1103D			PE	E-AB-F1185D			PE	E-AB-F0994D
CD4	GK1.5	APC	E-AB-F1097E	I-A/I-E	M5/114	APC	E-AB-F0990E	I-A/I-E	M5/114	APC	E-AB-F0990E
		FITC	E-AB-F1097C			FITC	E-AB-F0990C			FITC	E-AB-F0990C
		PE	E-AB-F1097D			PE	E-AB-F0990D			PE	E-AB-F0990D
CD45	30-F11	APC	E-AB-F1136E	IgD	11-26c.2a	APC	E-AB-F1189E	IgM	RMM-1	APC	E-AB-F1189E
		FITC	E-AB-F1136C			FITC	E-AB-F1189C			FITC	E-AB-F1189C
		PE	E-AB-F1136D			PE	E-AB-F1189D			PE	E-AB-F1189D
CD45.1	A20	APC	E-AB-F1184E	IgM	RMM-1	APC	E-AB-F1190E	<b>Stem cells</b>			
		FITC	E-AB-F1184C			FITC	E-AB-F1190C	Marker	Clone No.	Fluorochrome	Cat.No.
		PE	E-AB-F1184D			PE	E-AB-F1190D	CD105	MJ7/18	APC	E-AB-F1233E
CD62L	Mel14	APC	E-AB-F1011E	<b>NK cells</b>				CD117	2B8	APC	E-AB-F1233C
		FITC	E-AB-F1011C	Marker	Clone No.	Fluorochrome	Cat.No.			FITC	E-AB-F1233D
		PE	E-AB-F1011D	CD45	30-F11	APC	E-AB-F1136E			APC	E-AB-F1092E
CD8a	53-6.7	APC	E-AB-F1104E	CD45	30-F11	APC	E-AB-F1136E	CD45.1	A20	APC	E-AB-F1184E
		FITC	E-AB-F1104C			FITC	E-AB-F1136C			FITC	E-AB-F1184C
		PE	E-AB-F1104D			PE	E-AB-F1136D			PE	E-AB-F1184D
Foxp3	3G3	APC	E-AB-F1238E	CD49b	DX5	APC	E-AB-F1116E	KLRG-1	2F1	APC	E-AB-F1116E
		FITC	E-AB-F1238C			FITC	E-AB-F1116C			FITC	E-AB-F1273C
		PE	E-AB-F1238D			PE	E-AB-F1116D			PE	E-AB-F1273D
IFNγ	XMG1.2	APC	E-AB-F1038E	IL-10	JES5-16E3	APC	E-AB-F1197E	NK1.1	PK136	APC	E-AB-F0987E
		FITC	E-AB-F1038C			FITC	E-AB-F1197C			FITC	E-AB-F0987C
		PE	E-AB-F1038D			PE	E-AB-F1197D			PE	E-AB-F0987D
IL-10	JES5-16E3	APC	E-AB-F1243E	IL-17A	TC11-18H10.1	APC	E-AB-F1199E	Perforin	S16009A		